



Per Month

£900 Per

****COMMERCIAL OFFICE/FACTORY SPACE** **AVAILABLE END OF AUGUST****

A large, 1425 sq ft detached barn conversion offering commercial office/factory space in this popular, quiet little business park. The barn is located in Rowsham which is a quiet hamlet between Aylesbury and Leighton Buzzard on the A418. This unit was last used as an office space and has a fitted kitchen area, several segregated offices, large open-plan office area and toilet facilities. Outside there is plenty of off-road parking. This facility has always let very quickly in the past, so an early viewing is highly recommended.

HOLDING FEE: £207.70
DEPOSIT REQUIRED: £1,038.50

- DETACHED BARN CONVERSION
- AVAILABLE END OF AUGUST
- FITTED KITCHEN
- VERSATILE COMMERCIAL SPACE
- AMPLE OFF ROAD PARKING
- TOILET FACILITIES

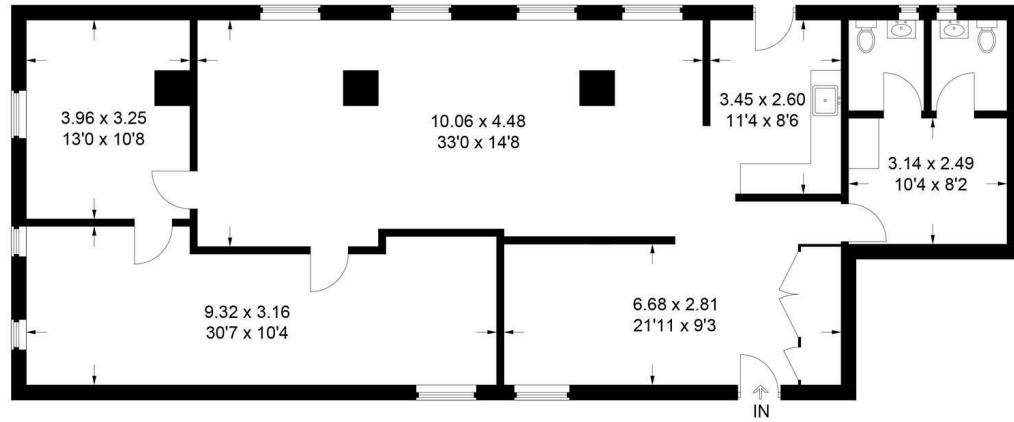


The Dutch Barn Manor Farm Courtyard, Rowsham, Aylesbury,

Estate Agents ~ Lettings Agents ~ Valuers ~ Independent Mortgage Advisors

EPC Rating: null

Approximate Gross Internal Area
132.4 sq m / 1425 sq ft



This plan is for layout guidance only. Not drawn to scale unless stated. Windows and door openings are approximate. Whilst every care is taken in the preparation of this plan, please check all dimensions, shapes and compass bearings before making any decisions reliant upon them.
© CJ Property Marketing Ltd Produced for Hurst

